



### Irvine City Council

Mayor Steven S. Choi, Ph.D.  
 Mayor Pro Tem Jeffrey Lalloway  
 Councilmember Larry Agran  
 Councilmember Beth Krom  
 Councilmember/Chair, Great Park Board Christina Shea

City Manager Sean Joyce

### Community Services Commission

Chair Kevin Trussell  
 Vice Chair Michael Carroll  
 Commissioner Farrah Khan  
 Commissioner Melissa Fox  
 Commissioner Jim Shute

### Inside Irvine Editorial

Managing Editor: Craig Reem  
 Associate Editor: Annie Brown  
 Activity Guide Editor: Alana Kaleikini  
 Activity Guide Coordinator: Dave Neustaedt  
 Contributors: Sawako Agravante, Shawmn Gallagher, Melissa Haley, Tom Macduff, Roy Padilla

### Inside Irvine Art

Art Director: Jonathan Price

*Inside Irvine* is published quarterly by the City of Irvine. Please address editorial correspondence to: *Inside Irvine*, c/o Public Information Office, City of Irvine, PO Box 19575, Irvine, CA 92623-9575 or via email at [insideirvine@cityofirvine.org](mailto:insideirvine@cityofirvine.org). For questions about the *Activity Guide* or advertising, call 949-724-6665 or email [activityguide@cityofirvine.org](mailto:activityguide@cityofirvine.org). For City of Irvine hours of operation visit [cityofirvine.org](http://cityofirvine.org).

Incorporated in 1971, the City of Irvine operates under a charter law form of government. As such, the City Council makes policy decisions while the City Manager is appointed by the City Council to function as the chief executive of the City. To contact the City Council, please call 949-724-6233. Irvine City Council meetings are held the second and fourth Tuesday of each month in the City Council Chamber, located at 1 Civic Center Plaza, corner of Alton Parkway and Harvard Avenue. Regular sessions begin at 4 p.m. with a possible recess prior to 5 p.m. to discuss matters under Closed Session. Irvine City Council meetings are cablecast live on ICTV Channel 30 and are webstreamed live on [cityofirvine.org/ictv](http://cityofirvine.org/ictv).

The programs presented in the *Activity Guide* section are provided through the City of Irvine's Community Services Department. All contents are copyright 2014. Request permission in writing to reprint.

**Disclaimer:** Although *Inside Irvine* accepts information, the City of Irvine does not assume responsibility for errors, omissions or misinformation in the advertisements, nor does the City recommend, endorse or guarantee products or services provided by advertisers.

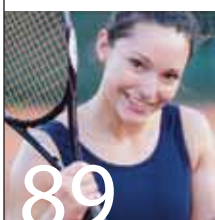
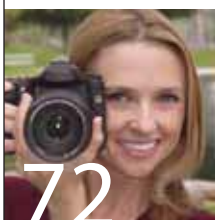
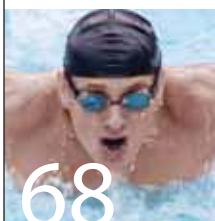
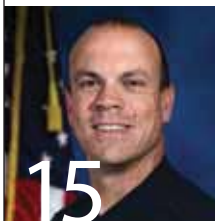
*Cover:* Community members at Mike Ward Community Park—Woodbridge. Photo by Challenge Roddie.



The City of Irvine's app, **Access Irvine**, is available for free download on iTunes and Google Play.



Comments, questions or suggestions?  
 Email us at [insideirvine@cityofirvine.org](mailto:insideirvine@cityofirvine.org)



## Features

### 7 Be Prepared

*The Irvine Police Department's Office of Emergency Management reviews steps to help you and your family prepare for emergencies.*

### 14 Pool Safety

*Important information to keep you and your families water safe. (Please read and share with loved ones and caregivers.)*

## Departments

- 2 Inside the City Manager's Office
- 3 Public Safety Update
- 4 News Briefs
- 6 Great Park Report
- 15 Irvine Spotlight
- 16 Irvine Resources
- 100 Inside Contacts

## Activity Guide

- 19 Events & Family Activities
- 24 Early Childhood
- 34 Children
- 51 Teens
- 54 Adults
- 65 Seniors
- 68 Aquatics
- 72 Arts
- 81 Orange County Great Park
- 85 Disability Services
- 86 Outdoor/Nature Activities
- 88 Pets
- 89 Tennis & Racquet Sports
- 96 Map & Locations
- 98 Registration



Many of the featured programs and activities are part of the City's *Healthy City Healthy Planet* initiative.