

DEMOGRAPHICS

Date of Incorporation	December 28, 1971
Form of Government	Charter Law, City Council and City Manager
Population	307,670
City Tree	Camphor
City Flower	Lily of the Nile
City Vegetable	Asparagus
City Insect	Western Swallowtail Butterfly
Incorporated Area	66 square miles
Preserved open space	6,934 acres
Elevation	45 Feet (City Hall)
Housing Dwelling Units	115,732
Registered Voters	151,299

Ethnicity

Asian	42.8%
White	39.3%
Hispanic	10.4%
Other	5.3%
African American	2.2%

Employment

Unemployment Rate	5.2%
Employment Base	277,251

Education

High School Graduates	95.7%
College Graduates	69.5%

Parks and Landscape Areas

Community Parks	22
Neighborhood Parks	39
Athletic Fields	141
Sports Courts	197
Sports Fields/Turf (acres)	188

Transportation

Circulation System	2,034 lane miles
Bikeways	327 miles



IRVINE CITY COUNCIL

Mayor Farrah N. Khan
Vice Mayor Tammy Kim
Councilmember Larry Agran
Councilmember Mike Carroll
Councilmember Anthony Kuo



Scan QR Code to view a digital copy of the FY 2021-2023 Budget



City of Irvine
 1 Civic Center Plaza
 P.O. Box 19575
 Irvine, CA 92623
 949-724-6000

cityofirvine.org

CITY OF IRVINE, CALIFORNIA



2021-2023 BUDGET IN BRIEF



COMMUNITY OVERVIEW

Incorporated in 1971, Irvine has grown into one of the safest cities in the country, promoting environmental stewardship, state-of-the-art transportation programs and systems, an enterprising business environment, stellar educational institutions, and a high quality of life.

One of the nation's largest master-planned communities, Irvine is a culturally diverse city with more than 300,000 residents, encompassing 66 square miles in the heart of Orange County.

For the fourth straight year, Irvine has earned the distinction of most fiscally healthy large city in the nation by *Truth in Accounting* and voted "Best City to Live in" by *Orange County Register* readers in its *2021 Best of Orange County* publication.

For additional information about the City of Irvine, visit cityofirvine.org.

TWO YEAR BUDGET AND FIVE-YEAR FINANCIAL PLAN

The City of Irvine is pleased to present the adopted two-year budget for the fiscal cycle that begins July 1, 2021 and ends June 30, 2023. The City's budget is developed in the context of a comprehensive five-year financial plan and is built upon the City Council's Strategic Priorities providing a blueprint for City framework to deliver high quality programs and services to the community. Through the budget and five-year financial planning, including quarterly updates, the City of Irvine strives to promote transparency, taxpayer accountability, and fiscal strength. We are proud to note that the City's efforts in maintaining strong fiscal health are consistently recognized by national and local financial organizations.

SALES TAX

Sales tax is Irvine's second largest revenue source and accounts for approximately 33% of the City's revenues. For every \$100 in taxable sales in Irvine, one dollar goes directly to the City, supporting public safety, parks, streets, and much more. The City's current tax rate is 7.75%. To find out how sales tax dollars work for you, visit cityofirvine.org/shopirvine.



CAPITAL PROJECTS

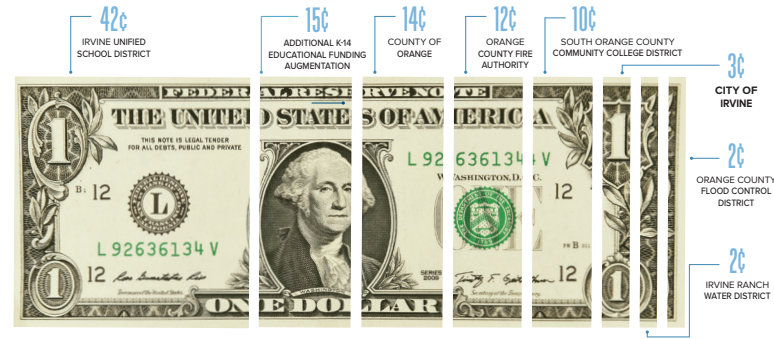
The Capital Improvement Program (CIP) identifies major public improvements to the City's infrastructure, and is used to plan and manage the City's growth. The City places a high priority on infrastructure construction, rehabilitation, and maintenance efforts to ensure its streets, landscaping, and facilities are maintained at an exceptional level.

KEY CAPITAL PROJECTS	FY 2021-22	FY 2022-23
FACILITY IMPROVEMENTS	\$5,888,170	\$6,524,000
GREAT PARK IMPROVEMENTS	\$6,810,000	\$3,850,000
LANDSCAPE IMPROVEMENTS	\$285,000	\$1,200,000
STREETS & MOBILITY IMPROVEMENTS	\$23,945,818	\$51,483,674
TOTAL IMPROVEMENTS	\$36,928,988	\$63,057,674

PROPERTY TAX BREAKDOWN

WHERE THE 1% PROPERTY TAX GOES

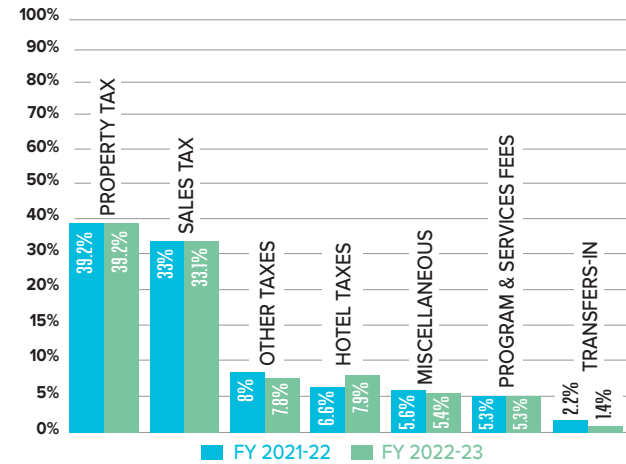
Property tax is a tax imposed on the value of real property, such as land and buildings. As Irvine's largest revenue generator, property tax is collected by the County and allocated according to state law among cities, counties, school districts, and special districts.



RESOURCES

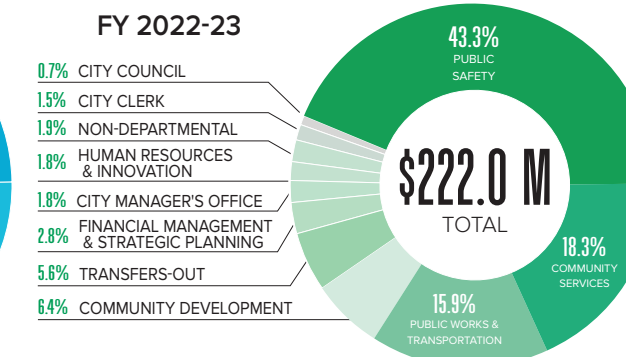
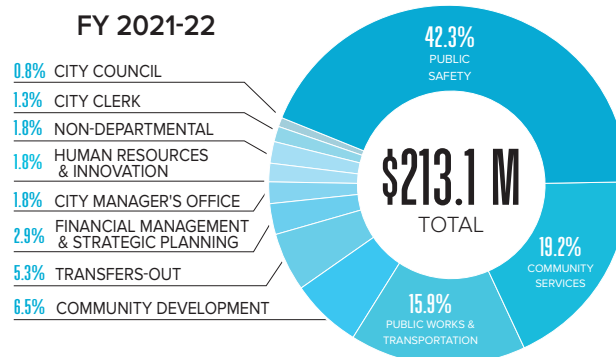
Total General Fund resources for fiscal year (FY) 2021-22 and FY 2022-23 are anticipated to be \$213.1 million and \$222.0 million, respectively.

GENERAL FUND RESOURCES	FY 2021-22	FY 2022-23
PROPERTY TAX	\$83,502,059	\$87,051,124
SALES TAX	\$70,393,060	\$73,406,017
OTHER TAXES	\$17,126,489	\$17,323,237
HOTEL TAXES	\$14,128,326	\$17,432,086
MISCELLANEOUS	\$11,937,888	\$11,985,038
PROGRAM & SERVICE FEES	\$11,338,062	\$11,806,014
TRANSFERS-IN	\$4,630,650	\$3,004,775
TOTAL RESOURCES	\$213,056,534	\$222,008,291



EXPENDITURES

The City's FY 2021-22 and FY 2022-23 General Fund budgeted expenditures are \$213.1 million and \$222.0 million, respectively. Although Irvine's population has grown over 24 percent in the past ten years, adding pressure on service demands and infrastructure, the costs per resident have remained relatively flat over the same time period, due to Irvine's dedication to strong fiscal accountability.



GREAT PARK

Over the next five years, the City will be planning, developing and activating several hundred additional areas of the Great Park, such as the Cultural terrace and golf areas. Great Park funding falls into two categories, Operating and Development. Operating includes restricted and unrestricted revenues and expenditures, while Development accounts for capital projects for the Great Park. No General Fund money can be spent on behalf of the Great Park and each expenditure must be recommended by the Great Park Board and approved by the City Council. The funds below account for all revenue and expenditures for the Great Park:

