



General Plan Update Information Session

September 22, 2022

6:00 - 8:00 p.m.





Zoom Webinar Instructions

Mic



Raised Hand



Question



Chat



- Members of the public will be muted throughout the meeting and will not be able to unmute themselves.
- We will share relevant links and information through the "chat" feature.
- Please use the “question” feature to ask questions.
- Please use the “chat” feature to for requests for technical assistance.
- If you are participating by phone, raise your hand for help by dialing * 9
- This meeting is being recorded and will be posted to the project website.



Our Guide for Productive Meetings



Raise your hand
to join the
conversation or
use the chat
box



Help to make
sure that
everyone has
equal time to
contribute



Keep input
concise and
focused so that
others have time
to participate



Actively listen to
others to
understand their
perspectives



Offer ideas to
address others'
questions and
concerns





Agenda

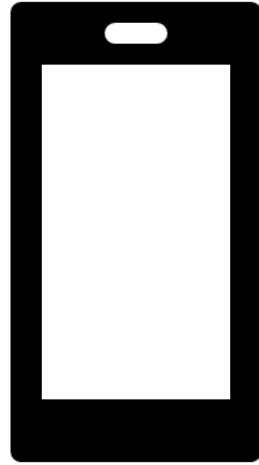
1. Welcome and Team Introductions
2. Background
3. Housing Element
4. General Plan Update
5. Community Engagement
6. Questions and Answers
7. Next Steps



Welcome and Introduction

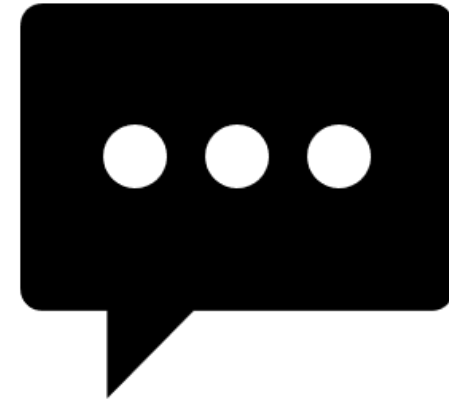


POLL EVERYWHERE – WAYS TO PARTICIPATE



BY SMART PHONE

Go to pollev.com/kwpoll1
on your internet browser.



BY TEXT MESSAGE

Text [kwpoll1](https://pollev.com/kwpoll1) to 22-333 on your
mobile device.

What is your favorite place in Irvine?

What is your preferred fall activity?

Picking apples

Starting school

Seeing leaves change

Heading to the beach

Other



Background



Background

What is a General Plan?

The General Plan represents the community's view of its future. It is:

- A state-mandated document that represents the City's long-range vision.
- A comprehensive, long-term plan for the future physical development of the City.
- A guiding document for administrative and legislative functions.

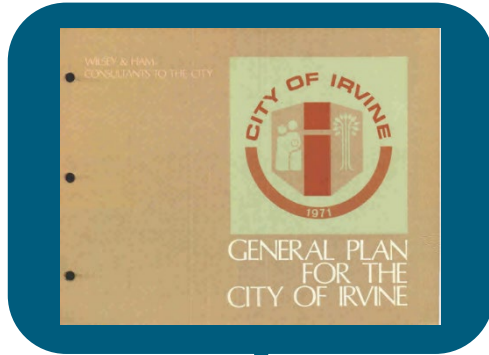




General Plan Timeline

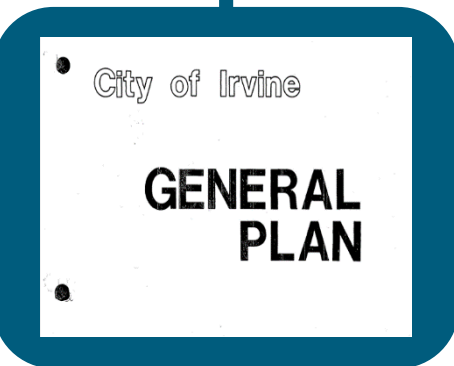
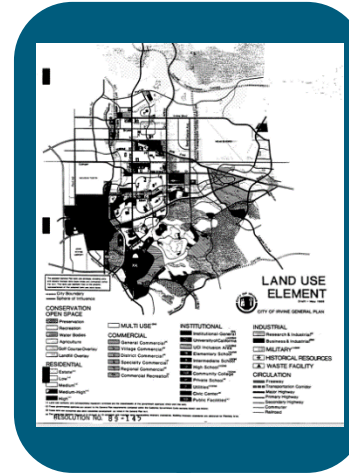
1973

FIRST GENERAL PLAN



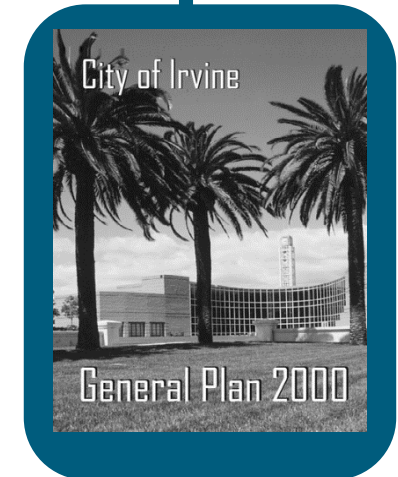
1989

**AMENDMENT ADDRESSED
CITY'S OPEN SPACE NEEDS**



1977

FIRST MAJOR AMENDMENT



2000

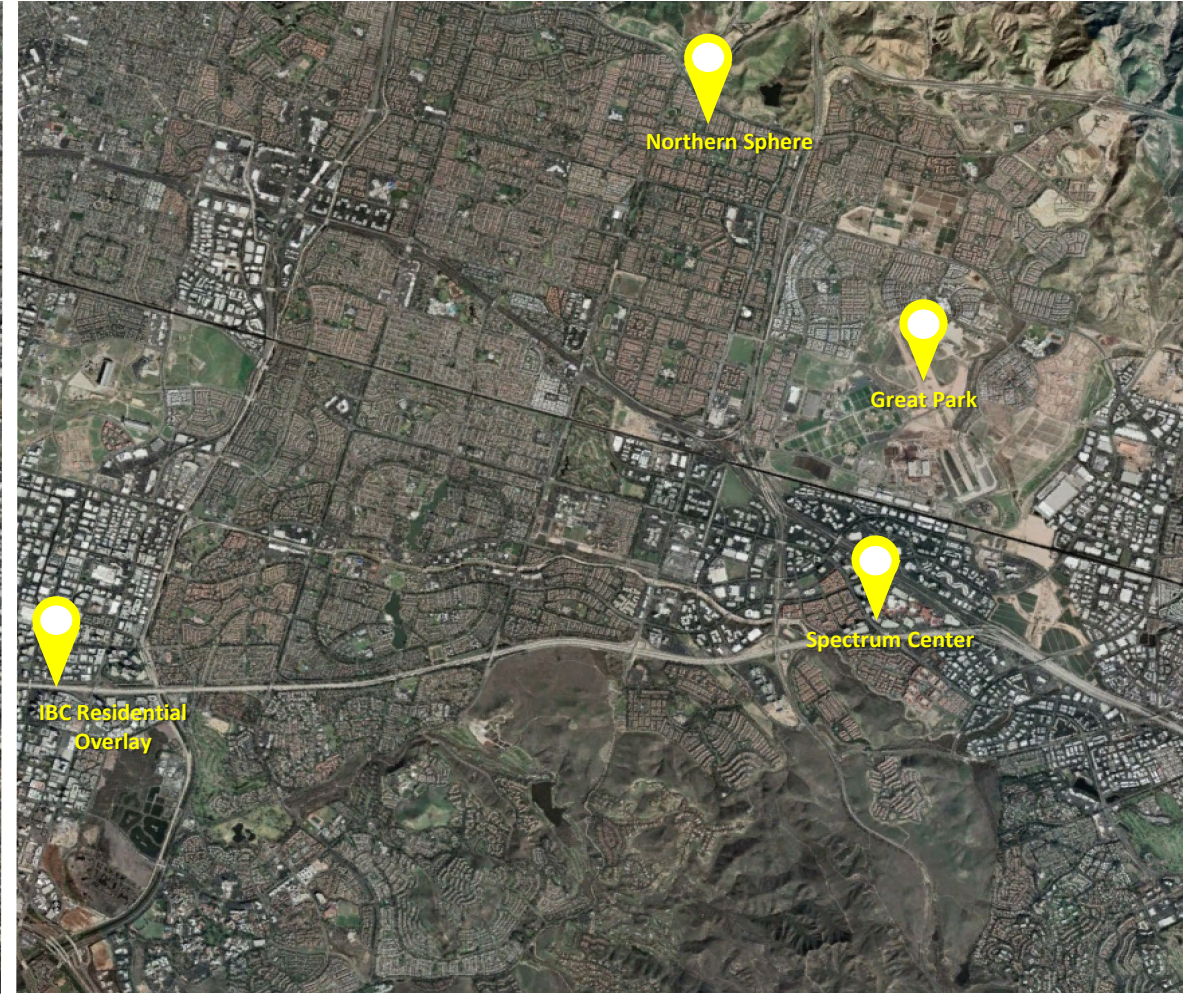
**COMPREHENSIVE
GENERAL PLAN UPDATE**



Significant General Plan Updates



2000
Population: 141,200



Current
Population: 310,250



Background

What does a General Plan consist of?

The General Plan is organized into various elements that address a broad range of issues. Each element contains goals and objectives.





Housing Element



Housing Element

What is a Housing Element?

- Irvine's "housing plan" is a required chapter in the General Plan. Irvine, along with all California cities and counties, is required to plan and meet the housing needs of everyone in the community.
- All cities and counties are required to update their Housing Element every eight years for State certification.



Housing Element

What is a Housing Element? (continued)

- The Housing Element contains goals, objectives, policies, and programs of how Irvine will meet its existing and future housing needs for all income levels.
- The Housing Element provides opportunities for the private sector to develop housing where market conditions determine when and where housing is built.
- The City does not build the housing.





Housing Element



FINAL

2021–2029

HOUSING ELEMENT

HCD Compliance Finding – May 6, 2022



- Irvine's 6th Cycle Housing Element was certified by the California Housing and Community Development (HCD) on May 24, 2022.
- Senate Bill 197 allows cities and counties three (3) years to complete required zoning.
- February 2025



General Plan Update



General Plan Update Goals

- Focused Update that will accommodate the 2021-2029 Housing Element (*i.e.*, update the Land Use, Circulation, Noise, and Safety Element).
- Incorporate changes required by state law.



- Examine goals, objectives, and policies to ensure that a high quality of life is maintained.
- Develop new environmental protection and climate action element as directed by City Council in 2019.
- Incorporate health and wellness theme throughout.



General Plan Update

Land Use

- Update the land use plan to align with the 6th Cycle Housing Element, including the Regional Housing Needs Assessment (RHNA) growth.
- Consolidate the Land Use element with the existing Irvine Business Complex element.



General Plan Update

Circulation

- Incorporate VMT as an added measure of traffic impact to satisfy SB743 and updated CEQA Guidelines
- Consider goals and objectives as part of the General Plan Update to address VMT mitigation measures and potential regional and local mitigation programs
- Update the Circulation Element with active transportation, complete streets, and vehicle trip reduction strategies
- Develop transportation policies and programs to accommodate the 6th cycle RHNA growth



General Plan Update

Safety

- Develop policies to address State statutes, including, but not limited to:
 - SB 379 and 246: Climate Change Adaptation and Resiliency Strategy and Vulnerability Assessment.
 - AB 32: Climate Change/ Greenhouse Gas (GHG) reductions.
 - AB 2140: Local Hazard Mitigation Plan.





General Plan Update

Environmental Review/Documentation

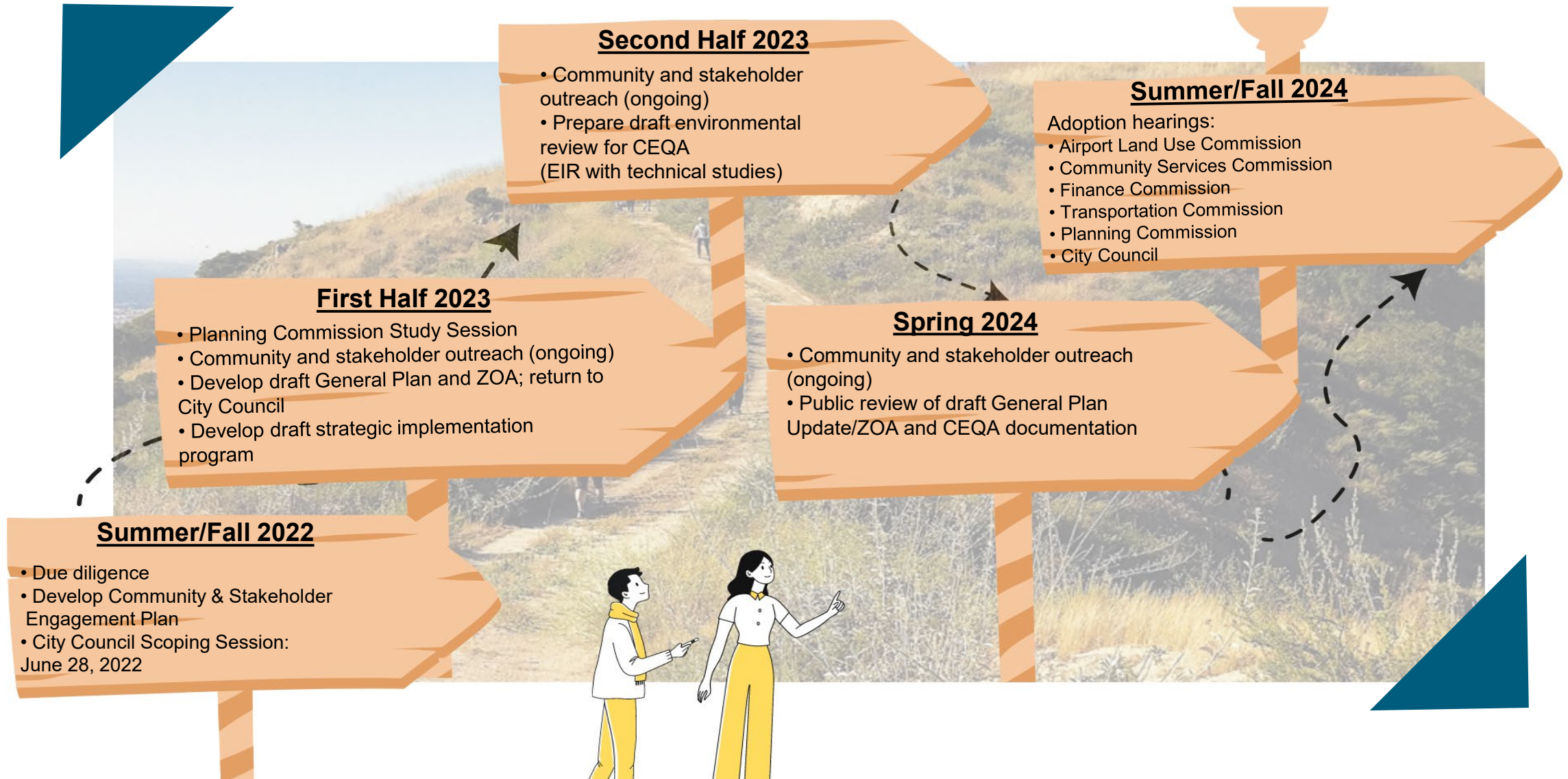
- Complete and submit appropriate environmental documentation in compliance with the California Environmental Quality Act (CEQA).

Program Environmental Impact Report (EIR)

- Establish existing baseline and future buildout conditions.
 - Develop and analyze project alternatives.
- Evaluate potential and cumulative impacts of the project.
 - Potential mitigation measures.



General Plan Update Timeline

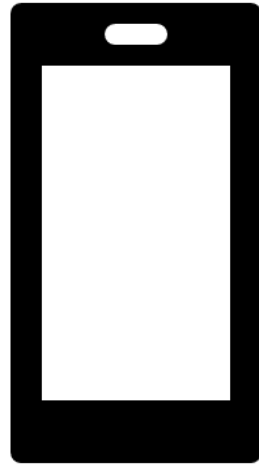




Community Engagement



POLL EVERYWHERE – WAYS TO PARTICIPATE



BY SMART PHONE

Go to pollev.com/kwpoll1
on your internet browser.



BY TEXT MESSAGE

Text [kwpoll1](https://pollev.com/kwpoll1) to 22-333 on your
mobile device.

How did you hear about today's informational session?

What type of outreach and engagement activities have you participated in before? (Multiple Choice)

A. City table at Farmers Market

B. Council Meeting

C. Workshop hosted at City facility

D. Event at the park

E. Online survey

Do you prefer in-person or virtual meetings? (Multiple Choice)

In-person

Virtual

Both



Questions and Answers



Questions



Raise your hand
to join the
conversation or
use the chat
box



Help to make
sure that
everyone has
equal time to
contribute



Keep input
concise and
focused so that
others have time
to participate



Actively listen to
others to
understand their
perspectives



Offer ideas to
address others'
questions and
concerns

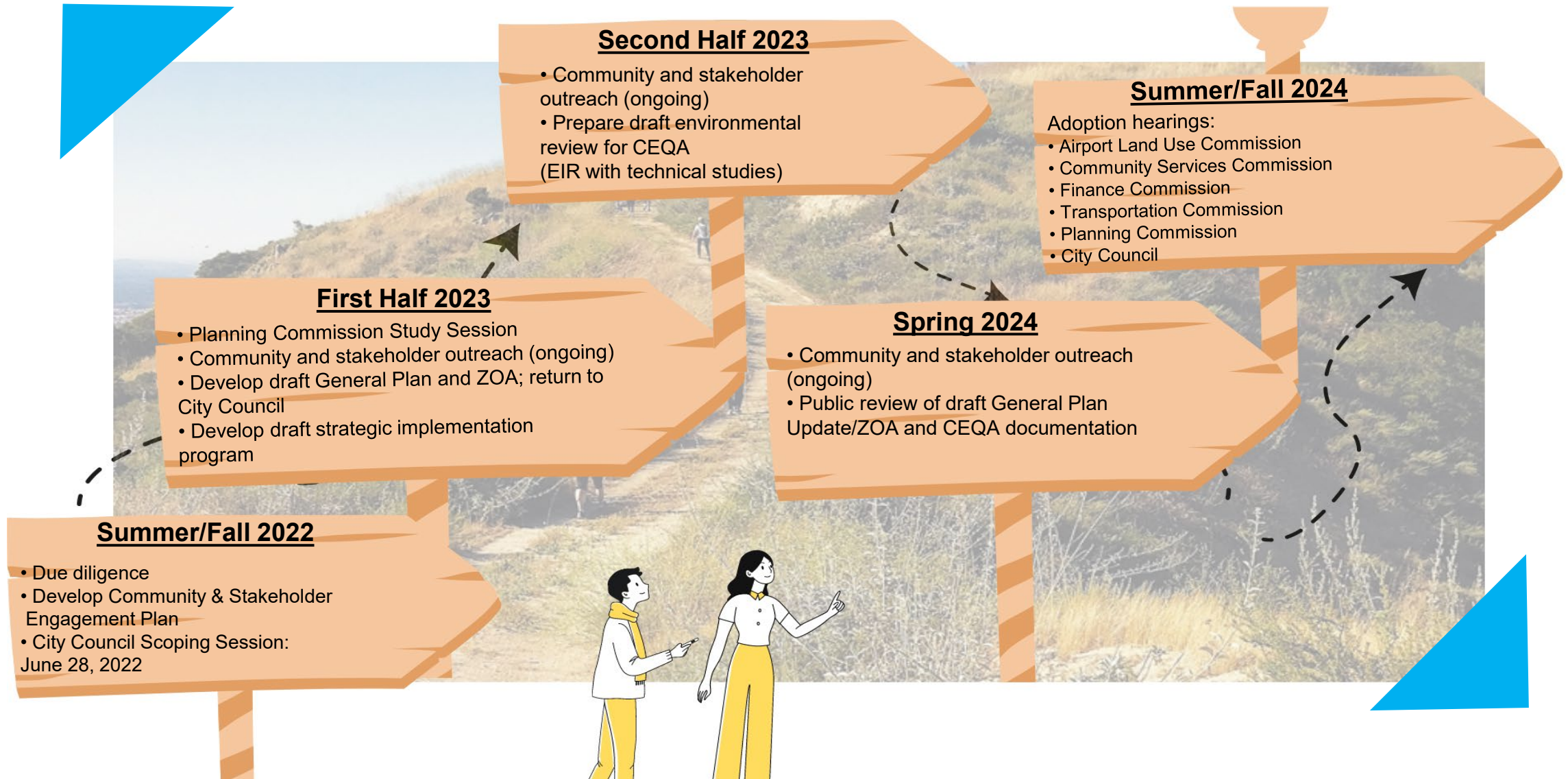




Next Steps

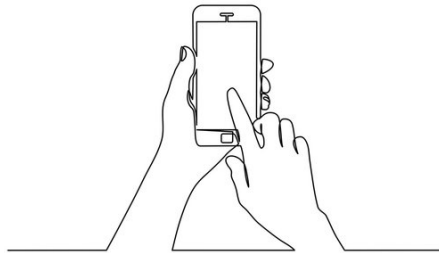
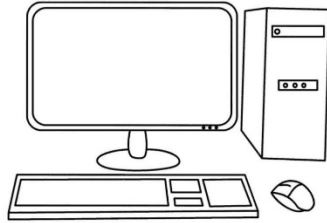


General Plan Update Timeline





Contact Us



Website: *Irvine2045.org*

Phone Number: 949-724-6581

Email: *gpupdate2045@cityofirvine.org*



General Plan Update Information Session

September 22, 2022
6:00 – 8:00 p.m.

