



CONSTRUCTION NOTICE

ANNUAL STREET REHABILITATION & SLURRY SEAL PROJECT

As part of the City's ongoing effort to improve and maintain the quality of our roads, the Project Delivery & Sustainability Department will begin pavement rehabilitation and curb and gutter improvements on public streets only in the Westpark, Westpark II, and Cypress Village neighborhoods as well as portions of Ridge Valley, Barranca, Alton, Jamboree, Culver, and Harvard.

Every effort will be made to complete this essential work quickly to minimize inconvenience to you and your community.

Construction: Work is scheduled to begin August 21, 2023, and is estimated to be complete in spring 2024. Pavement work will not start until concrete work is complete. **You will receive another notice when work is scheduled on your street.**

Work Hours Residential streets: 8 a.m. to 4 p.m.; arterial streets: 9 a.m. to 3 p.m.
Monday to Friday:

Notifications & Parking: At least 72 hours before work begins in your area, temporary "No Parking" signs will be posted on streets where work will occur showing the dates and times parking will be restricted. **Vehicles parked in violation of a "No Parking" sign will be towed.** Parking is allowed on streets without "No Parking" signs.

Access to Streets & Driveways: Access to streets and driveways may not be available or may be restricted while work is underway. Alternate routes will be provided whenever possible.

Access to residents' driveways will be restricted during resurfacing work. **Cars must be parked outside that day's posted work area until the work is complete and the signs are removed.**

Access to Businesses & Private Streets: Access to businesses and to private streets/communities will be maintained during the project.

Trash Pick-up: **Trash services will occur on your normal service day even if work is scheduled.**

Schedules may change to accommodate weather conditions or other unforeseen factors. If work does not occur on the posted date, it will be rescheduled and signs with new dates will be posted 72 hours before work begins.

Please read project FAQs on the following pages. If, after reading them, you have unanswered questions or require special accommodations, please call the Project Management Hotline at 949-724-6676 or email us at slurry@cityofirvine.org. You can find additional project information at www.cityofirvine.org/streets.

Thank you for your anticipated patience and cooperation while we work to improve the roads in your neighborhood.



ANNUAL STREET REHABILITATION & SLURRY SEAL FAQ

Residential

Q: My car was towed. Who do I contact and what will it cost me to get it back?

A: Please call the Irvine Police Department at 949 724 7000. Staff there can tell you what you need to do and what it will cost.

Q: When will my street be slurried/paved?

A: The contractor will post signs on your street 72 hours before work is to begin. If you require special accommodation on that day, please call our project hotline at 949 724 6676.

Q: I live on a private street. Since it won't be slurried/paved why did I get this notice?

A: There will be work on streets adjacent to yours and you may have to use alternate routes to enter/exit your street/community.

Q: I have a special need, will you change the paving date for my street?

A: Please call our project hotline at 949 724 6676 to discuss your need with staff.

Q: Where can I park my car while work is being done?

A: On any street not posted No Parking.

Q: How soon can I drive on my street after it has been paved/slurried?

A: After the "No Parking" signs and delineators are removed.

Q: Cars drove over the new slurry too soon and now it has tire tracks and gouges. When will you re-do it?

A: Some tire tracks and other "flaws" are normal for the first few weeks after slurry is applied. As traffic drives over the surface, the tracks and other flaws should smooth out. If, after a few weeks, they do not, please call our project hotline at 949 724 6676.

Q: I drove over the new slurry and now it's all over my driveway. When will you clean it off?

A: Depending on the project schedule, it may be done right away or it may be when all slurry work is complete. Please call our project hotline at 949 724 6676 so we can alert the contractor.

Q: Our curbs/gutters/sidewalk, etc. have been damaged for some time. Will you repair them when you do the paving/slurry?

A: We cannot repair curbs/gutters/sidewalks, etc. as part of our Annual Street Rehabilitation and Slurry Seal Project. Please call our project hotline at 949 724 6676 and we will ask a representative from our Streets Department to look at the location and, if appropriate, schedule the repair work.

Q: Some areas on our street did not get slurried, will you do them?

A: Yes.

Q: Our neighborhood has a lot of cars. Will you get a parking variance so we can park on adjacent streets now posted No Parking?

A: If there will be a parking variance on adjacent streets now posted No Parking the No Parking signs will be temporarily covered on the day of the variance.

Q: My street wasn't slurried/paved. Why?

A: It may be that the street is adjacent to but outside the project area, or it may be that your street is a private street and your Homeowner Association is responsible for maintaining your street.

Business

Q: Why don't you do the work at night or on the weekend?

A: The City does not apply slurry at night because typically the temperature is too cold to allow it to set up. Paving can be and sometimes is done at night, depending on the effect it would have on residents.

Q: Will entry to my business be blocked and if so for how long?

A: The contractor will make sure you have access to your business at all times. If one driveway is closed, other driveways will be open.

Q: Our delivery trucks need to make wide turns to get into our driveway. On days when work will be done how will the trucks access our driveway?

A: The contractor will make sure that delivery access is available at all times.

Q: We have a special event/sale scheduled for the day you are going to pave/slurry our street. Will you reschedule the work to accommodate it?

A: Please call our project hotline at 949 724 6676 to discuss your needs with staff.

Q: We have limited on-site parking so some employees have to park on the street. Will they do one side of the street at a time so my employees have somewhere to park?

A: The contractor generally paves one side of the street at a time. In the event the contractor must do both sides on the same day as is sometimes the case with slurry, your employees may have to park on adjacent streets not posted No Parking.

Q: Will my business's sign, trees, driveway, or other property be protected?

A: The slurry/paving work should not affect your signs, trees, driveways, or other property but if there is a chance it might, it will be protected. In the event it is not and the work damages your property, please call our project hotline at 949 724 6676 and we will have our inspector meet with you to discuss a remedy.



Street Maintenance

Annually, the City of Irvine Project Delivery and Sustainability Department performs pavement rehabilitation – either slurry seal or asphalt overlay – on selected City neighborhood streets and arterials to maintain and upgrade them.

Slurry Seal or Asphalt Overlay?

Slurry Seal

Slurry seal, a thin, tough layer of asphalt emulsion blended with aggregate – very small crushed rock – is applied to structurally sound asphalt to extend its life expectancy and reduce the need for costly repairs for as long as 8 years.

Well in advance of the slurry seal application, deteriorated areas of the selected streets are patched and any low hanging branches that would obstruct the slurry seal truck are trimmed.



On the day slurry will be applied, after the street is closed and parking prohibited, the slurry truck spreads slurry onto the pavement and workers with wide squeegees walk behind it to ensure the mixture is spread smoothly and to correct areas not properly covered. Four to 6 hours after the slurry is applied the street will reopen.

The slurry will continue to cure for several days so vehicles turning their wheels while stopped and heavy trucks will cause what look



like gouges and leave tire marks in the new slurry. These markings are generally temporary and smooth out as traffic continues to drive over them. Additionally, small surface aggregate may roll into the gutter. This is normal and will be swept up when the project is complete. Aggregate may also adhere to vehicles and tires that transfer it to driveways. The former can be minimized by traveling more slowly for the first few days after the road reopens, transfer to driveways will be removed at the end of the project.





Street Maintenance

When fully integrated with the underlying asphalt two to three weeks later, the new slurry sealed street will have a smooth, uniform appearance and provide drivers better skid resistance and improved handling.

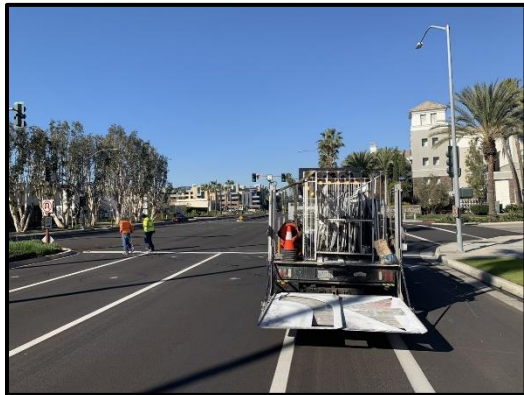
Asphalt Overlay

Streets showing areas of unacceptable deterioration cannot be restored with slurry seal, they must be ground and overlaid with new asphalt.

Before the new asphalt is placed, the existing asphalt is ground down to two inches along the gutters. This provides a smooth transition to the new surface.

On the day work is scheduled to begin, the street will be closed to vehicular traffic and street parking prohibited.

When the grinding is complete, a new layer of renewable, fiber-reinforced asphalt – which reduces the required asphalt thickness so there are fewer emissions and improves both crack and rut resistance – is placed over the existing asphalt. The fiber reinforcing extends the life of the new asphalt significantly.



Immediately after the new asphalt is placed, it is compacted to stabilize it, eliminate air pockets which would cause the asphalt to disintegrate rapidly as traffic drives over it, increase its resistant to reflective cracking – cracking directly over existing cracks in the underlying asphalt, ensure no aggregate pierces the new surface, absorb stress, and reduce permeability. Finally, any manholes and valve box covers in the street are raised to the new street level, any original permanent striping is replaced, and the street is reopened to vehicular traffic.

The new asphalt, with slurry seal overlays every five to seven years, can last as long as 20 years before needing another overlay.

If you have questions please call the Project Management Hotline at 949-724-6676 or email us at PM@cityofirvine.org.